

síolta

Quality Assurance Programme

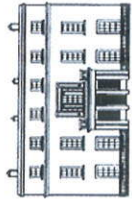


Certificate of Validation

ADAPT Child & Youth Service, Rosbrien, Co. Limerick achieved an overall Síolta quality rating of

Level 4

on 15th August 2018



A S R O I N N | DEPARTMENT OF
OIDEACHAIS | EDUCATION
AGUS SCILEANNA | AND SKILLS

GUIDE TO QUALITY LEVELS

LEVEL 1: No evidence of quality | LEVEL 2: Some evidence of quality
LEVEL 3: Significant evidence of quality but some issues still outstanding
LEVEL 4: Comprehensive evidence of quality

síolta

The National Quality Framework
for Early Childhood Education