

ADAPT

DOMESTIC ABUSE SERVICES

Company registration number: 84938

ANNUAL REPORT 2021

*Support and safety for women and their children
affected by domestic abuse*

Table of Contents



CHAIRPERSON’S ADDRESS	3
DIRECTOR OF SERVICES OVERVIEW	4
ABOUT US	5
OUR PEOPLE	6
ADAPT’S VISION AND MISSION & VALUES	9
2021 – THE YEAR IN REVIEW	11
OUR SERVICES	12
INCOME GENERATION AND EXPENDITURE	17
EXTRACT FROM FINANCIAL STATEMENTS 2021	19

ADAPT Domestic Abuse Service receives statutory funding from the following agencies:



DEPARTMENT OF JUSTICE, EQUALITY AND LAW REFORM
AN ROINN DLÍ AGUS CIRT, COMHIONANNAIS AGUS ATHCHÓIRITHE D



CHAIRPERSON'S ADDRESS

ADAPT's 2021 annual report acknowledges the significant challenges experienced by the 899 women and 153 children who were supported across the services that ADAPT provides during the course of the year. As with 2020 the environment and working conditions for staff continued to be dominated by the impact of the Covid 19 pandemic. In line with public health guidelines full services were resumed from 4.10.21. In order to facilitate the resumption of full services the following protocols were put in place:

- Refresher COVID training was delivered to all staff.
- Offices were reconfigured to allow social distancing.
- Child and Youth service began operating in family pods.
- Wearing of face coverings was ongoing.
- Break times and lunch times for staff were staggered.
- Risk assessments were conducted for contractors/visitors to ADAPT.

In December, due to the highly contagious variant of COVID that had spread in the country we saw an increase in the number of staff and residents both testing positive for COVID and/or being named as close contacts. Unfortunately, this occurred mainly over Christmas week and into the New Year leaving shifts in the refuge quite vulnerable. Thankfully, due to the willingness of staff to come in at very short notice during their annual leave we were able to continue to support the 13 families in the refuge over this period.

In March to May , 2021 there was a planned transition at Director of Services level on the retirement of Monica McElvaney and the appointment of Denise Dunne as the incoming Director. I would wish to put on record my appreciation of the impact Monica had on Adapt services during her time as Director and the positive impact her commitment made on the lives of the women and children in contact with Adapt services during her time.

The range and quality of the services provided by ADAPT depend on a committed staff team supported by a number of volunteers. The team is led at senior level by a management team led by Denise Dunne as Director of Services, Claire Anderson (Assistant Director of Services since July 2021) and Kevin Taylor (Finance and Organisational Manager). Governance is provided at Board level by the appointed Directors of the company. In 2021 the Board of Directors met on 6 occasions. The Board is supported by a Human Resources Sub Committee, an Audit and Finance Sub Committee and a Governance Sub Committee. I wish to acknowledge the support that the Directors have provided to the staff and the service, both at the corporate governance level as well as their own individual contributions.

During 2021 the Board and the Senior Management team worked together on reviewing ADAPT's governing documentation in order to comply with the Charity Regulator's deadline of 31.10.21.

It is also important to acknowledge and thank the funders that contribute to the continued running of ADAPT. These range from statutory agencies to individuals and voluntary fundraisers. In recent years a number of corporate sponsors have come on board in providing funding, including also separate fundraising by the staff of these companies. This engagement by the corporate sector has continued into 2021. The Board acknowledges that this support allows ADAPT to continue to provide a full range of quality services to women and children that need to avail of them.

ADAPT'S Strategic Plan 2018-2022 continued to be operationalised in 2021. The staff teams, management and the Board developed operational plans to implement the objectives and actions that are set out in the plan for their respective roles. Work also continued in 2021 on the integration of Trauma Informed Care into all elements of service delivery within ADAPT.

While the refuge continued to be busy all year a number of families stayed longer in refuge than required due to very long delays in getting onward referrals into the homeless service. This created problems for women/families seeking refuge. Safe Ireland's Air B&B initiative was utilised whereby families could be accommodated in a hotel in Limerick. However, the numbers of families that could avail of this was limited due to the risk to their safety.

Significant new developments:

- Operation Sábháilte, a pilot that was started in partnership with an Garda Síochána in Henry Street in late 2020 continued throughout 2021. This initiative which focused on identifying and supporting women deemed by the Gardaí to be high risk, resulted in very positive outcomes and demonstrates a commitment by the Gardaí to continue to tackle the serious issue of domestic abuse.
- ADAPT Charity Shop – with the lease expiring on the shop in Sarsfield Street, Limerick city the search continued throughout 2021 for a bigger premises to trade out of. We were very thankful to the management of the Parkway Shopping Centre, Limerick who provided us with a small unit in a temporary capacity.
- 2021 saw the demand for our outreach services rise. As a response to this we expanded our outreach service in the County to include outreach clinics in Hospital and Rathkeale and in the City to include clinics in Moyross and John Street
- With COVID restrictions continuing to operate we developed our domestic abuse training to deliver them on-line. The demand for this training was high during 2021 as domestic abuse continued to be highlighted in the media with Gardaí reporting escalations in their domestic abuse call-outs.
- We received funding from Túsla to run our support groups virtually. The platform that was used was a bespoke designed platform that had added security to run these groups safely. A new psycho-educational programme entitled 'Reaching Out' was piloted via Kara Konnect and our 'Let's Talk' support group ran throughout the year remotely
- In 2021 we were delighted to receive €1.5 million funding from the JP McManus Committee to fund a new capital project to extend our current services in ADAPT House. We engaged with the Housing Authority in December 2021 with a view to tendering for the work on e-Tenders in early 2022.

ADAPT Domestic Abuse Services continues to strive to provide quality services to women and children that experience domestic abuse. The provision of such a service is dependent on developing and sustaining effective partnerships with state bodies, other voluntary agencies, funders and the communities in which we work. It is vitally important however that we always ensure that we continue to work in partnership with the women and children that need to avail of our services and that we listen to them and involve them in future planning of services.

Kevin O'Farrell,

Chairperson

DIRECTOR OF SERVICES OVERVIEW

2021 was a year of change for ADAPT as an organization. Changes to the Senior Management team, the Middle Management Team as well as some of the staff teams meant saying goodbye to some of our most experienced and well-loved staff and a massive 'Fáilte Romhat' to some people joining ADAPT anew. It was an exciting and often challenging year as new energy came on board, but the demand for the services that we offer increased, highlighting the seriousness and prevalence of domestic abuse in our communities. Underlining all of this, of course, was the continued impact of the COVID pandemic.

Adapting to COVID restrictions and COVID casualties while continuing to support women and children throughout all of our services was also a challenge. Ensuring we had adequate staff cover for our 24-hour refuge service and helpline meant that staff were often working longer shifts or being asked to work at very short notice. The willingness and flexibility of staff is testament to their dedication and commitment in providing a high standard of service for all the women and children that we support.

Move-on options for women leaving refuge presented more of a problem in 2021. Women were staying in refuge longer as the move-on options that were previously available to women became harder to source. The housing crisis deepened throughout 2021 and this had a knock-on effect on women needing to leave home because of abuse. We were grateful to receive additional funding from Túsla with a view to expanding our outreach service and offering continued one-to-one support, advocacy and safety planning for women who for the most part were living at home with their abusers.

ADAPT continues to seek out ways of collaborating with other agencies that provide a vital network for women that need support. Operation Sábháilte, the pilot programme that is ongoing with An Garda Síochána, continued throughout 2021 with many women receiving additional support around legal recourse. Our work with the Court Services was also ongoing through 2021 despite restrictions still being implemented in the Courthouse.

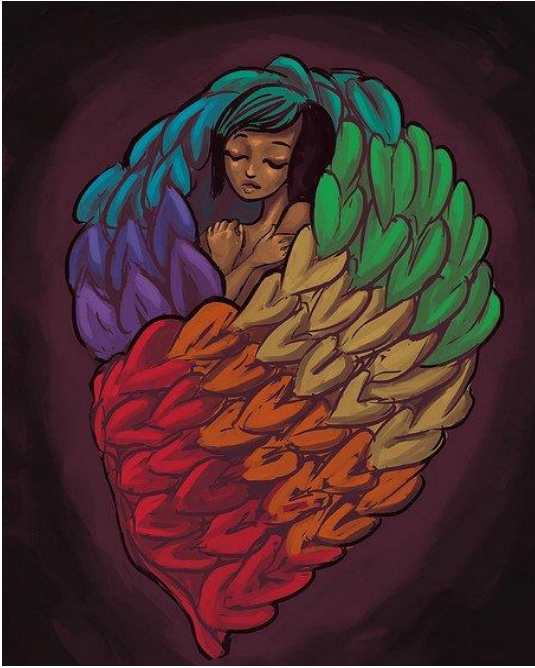
Awareness raising and training on domestic abuse also had to be re-adjusted and adapted in 2021, mainly due to the pandemic. Two new on-line training modules were developed and rolled out to over 300 participants throughout the year. ADAPT joined forces with Amber Women's Refuge in Kilkenny and a number of other organisations throughout Limerick to become part of Ireland's One Million Stars Campaign which is part of the One Billion Stars Global Campaign. This campaign aims to connect communities through the power of creativity and raise awareness of domestic violence and all violence towards women.

All of this work couldn't have happened without the huge commitment and dedication of the staff and management teams in ADAPT. Their willingness to be flexible and help out in all areas of the service ensured that we were able to continue to provide a range of quality services for women and children throughout 2021 and throughout the pandemic. On behalf of the senior management team, I'd also like to thank the Board of Directors who continued to provide support to us, as well as providing their usual high standard of governance and oversight.

Looking ahead to 2022 we hope to build on some of the new and innovative partnerships and initiatives that were formed in 2021. We continue to work in solidarity with Safe Ireland and all the other domestic abuse refuges and support services throughout the country. Our priority, as always, will be to develop and respond to the emerging needs of women and children and help them on their journey of recovery from the trauma of domestic abuse/coercive control.

*Denise Dunne,
Director of Services*

ADAPT DOMESTIC ABUSE SERVICES—ABOUT US



ADAPT Domestic Abuse Services is a support service for women survivors of domestic abuse and their children. Located in Limerick City we provide a range of services including 24 hour helpline support; emergency refuge accommodation; outreach services; emotional and practical support for women and children. We also work with other agencies to enhance their understanding of domestic abuse and their capacity to recognise, respond and refer appropriately.

ADAPT's Services

- 24 hour access to safe refuge
- 24 hour free confidential helpline
- Outreach service in Limerick City & County
- One-to-one practical and emotional support for women survivors
- Information, advocacy and accompaniment
- Support for children who have witnessed domestic abuse
- Supports for young people including Domestic Abuse Teens Support (DATS)
- Play therapy service
- Weekly support groups for women survivors
- Adult education programmes
- Working with other agencies to address the needs of survivors
- Public awareness including co-ordination of the annual 16 Days campaign
- Delivery of domestic abuse awareness training
- Delivery of Healthy Relationship programmes for young people
- Free support and information service based in Limerick Courthouse one day per week for women seeking legal orders related to domestic abuse.

Board of Directors:

The Board of Directors of ADAPT Domestic Abuse Service is committed to maintaining the highest standards of corporate governance and is in compliance with the Charities Governance Code.

The Board of Directors comprise the following: Kevin O'Farrell (Chair); Deirdre Moore, Eileen O'Neill, Mary Kenehan, Alix Tiernan (stepped down from Board on 30/9/2021), John Flanagan and Leonie Kerins. The Board members are drawn from diverse backgrounds and bring with them a wide range of skills and experience. The Board of Directors met on the following dates during 2021: 01/04/2021, 22/04/2021, 8/06/2021, 07/07/2021, 30/09/2021 (AGM) and 11/11/2021.

Committees:

The Board establishes committees to take responsibility for specific areas of the work and sets down the terms of reference for them. Currently there are three committees and each report directly to the Board. All three Committees have been very active in 2021.

HR Committee:

The HR Committee assists the Board in ensuring that all relevant HR issues are reviewed, monitored, and highlighted to the Board as required. In 2021 the members are Mary Kenehan (Board member) and Eileen O'Neill (Board member). Denise Dunne (Director of Services) and Kevin Taylor (Finance & Organisational Services Manager) attend meetings of this committee.

Audit & Finance Committee:

The Audit & Finance Committee monitors and reviews the financial performance of ADAPT. It provides an independent review of the annual budgets, forecasts, monthly management and annual financial statements and reports. The Audit and Finance Committee reports directly back to the Board of Directors.

In 2021 the members were Kevin O'Farrell (Board member), and Therese Ross (co-opted to sub-group). Denise Dunne (Director of Services); Kevin Taylor (Finance and Organisational Services Manager) attend meetings of this committee.

Governance Committee:

This Committee was set up in 2021 with oversight of compliance with the Charities Regulator and review of some of the governing policies of the organization. In 2021 the members were Alix Tiernan (Board member), Leonie Kerins (Board member), John Flanagan (Board member). Denise Dunne (Director of Services); Claire Anderson (Asst. Director of Services) and Kevin Taylor (Finance and Organisational Services Manager) attend meetings of this committee.

Risk Management and Safety Statement

ADAPT Domestic Abuse Services ensures that there is an effective Safety Statement and Risk Management System in place to provide a high quality, safe environment for clients, staff, volunteers and visitors.

Staffing Structure:

During 2021 ADAPT's Senior Management Team comprised :

Director of Services (Monica McElvaney – up to 30/4/2021, Denise Dunne from 01/03/2021),
Assistant Director of Services (Denise Dunne up to 28/02/2021, Claire Anderson from 1/7/2021)

Financial and Organisational Services Manager (Kevin Taylor).

The Director of Services reports directly to the Board of Directors and provides reports to the Board in advance of Board meetings to ensure that it has full oversight of its governing responsibilities. Matters such as policy, strategic development, corporate governance and financial budgets are monitored by the Board.

In addition, ADAPT has a 38 (28.21 WTE) core staff working across 7 departments. An additional 17 staff working directly for ADAPT are employed through Community Employment Scheme and Job Initiative.

ADAPT is also the Sponsor for an additional 15 CE positions across 6 other organisations namely:

Citizen's Information Services, Mid-West SIMON, Doras Lúimní, Headway, Self-Help Africa and Irish Cancer Society.



ADAPT'S TEAMS

ADAPT has 7 teams who work tirelessly in providing and supporting a range of services. All staff are trained in and work using a trauma and adversity informed approach.

Refuge Service

This team has 7 (4.52 WTE) core staff. Their focus is on addressing the needs of women and children living in refuge.

Women's Services

This team has 6 (5.57 WTE) core staff. Their focus is on supporting women survivors of domestic abuse and coercive control, both through our community outreach service and through our refuge service.

Child and Youth Services

This team has 10 (7.11WTE) core staff. They focus on addressing the needs of children and young people who have experienced domestic abuse/coercive control. They also work with mothers in supporting their children.

Finance and Organisational Services

This team has 4 (3.24 WTE) core staff. They provide services to support ADAPT to function to appropriate governance and compliance standards and to support the other teams through their HR, finance and administrative functions.

Training and Development

This team has 3 (1.87 WTE) core staff. Their focus is on education, prevention, public awareness and fundraising. They also provide various training to professionals to enhance their capacity to respond appropriate to domestic abuse and coercive control.

Property Services

This team has 4 (2.63 WTE) core staff. Their focus is on maintaining the upkeep of the building, surrounding grounds and transitional housing as well as maintaining health and safety standards throughout the organization.

Charity Shop

This team has 1 (.31 WTE) core staff. The purpose of the charity shop is to generate unrestricted funds to enable ADAPT to continue to provide and develop quality services.

Community Employment and Job Initiative

ADAPT also has a Community Employment Scheme and Job Initiative Scheme. The staff on this scheme provide support across all of the services that ADAPT offer.

*THE VISION OF ADAPT IS
A WORLD FREE FROM DOMESTIC ABUSE*



MISSION

The Mission of ADAPT is to offer support and safety to women and their children affected by domestic abuse. The service is committed to challenging domestic abuse by strengthening the capacity of individuals, communities and organisations to respond effectively and to change society so that domestic abuse is no longer tolerated.

The Values of ADAPT are:

V

EMPOWERMENT *We value empowerment as an effective approach when supporting women affected by domestic abuse. This approach helps the women become stronger and more confident, especially in relation to making decisions that affect their lives.*

A

RESPECT *We are committed to respecting the dignity of every individual that comes in contact with ADAPT including our service users, our staff, volunteers and external agencies.*

L

PEOPLE-CENTRED *We are committed to providing services that are responsive and relevant to each service user's unique needs. We actively listen to the voice of our service users and value their feedback.*

U

EQUALITY *We embrace the values of equality and diversity by treating staff, volunteers and service users with impartiality, inclusiveness, openness, and fairness.*

E

EMPATHY *We work with sensitivity and compassion so that we can better understand and respond to the needs of the women and children who seek our support.*

S

NON-JUDGEMENTAL *We believe that all our service users have the right not to be judged. We are committed to treating all service users the way we would want to be treated, regardless of their life circumstances, challenges and experiences.*

TEAMWORK *We believe in working together in a spirit of solidarity and co-operation where staff and management all contribute to the development of the service.*

INTEGRITY *We are committed to adhering to the highest standards of users and to being honest and truthful in our dealings with all who come in contact with ADAPT including our service users, staff and external agencies.*

2021—THE YEAR IN REVIEW

24 HOUR CONFIDENTIAL HELPLINE:

1,412 helplines in 2021



REFUGE SERVICE:

121 adult admissions and **210** child admissions.



OUTREACH SERVICE:

212 women supported through outreach service throughout Limerick City and County.



NEW REFERRALS:

The total number of new referrals to ADAPT in 2021 was **563**.

COURT ACCOMPANIMENT

358 individual women were supported to access information and support on legal protection, including court accompaniment.

During 2021 ADAPT supported **899** women and **153** individual children through our various services.

EXPANSION OF COMMUNITY OUTREACH SERVICE

Due to the increased demand for services and difficulties in moving women on from refuge we looked to expand our community outreach services throughout Limerick City and County. We received funding from Túsla to begin this process and community outreach centres were set up in Moyross (Limerick City) and Hospital and Rathkeale (Co. Limerick).

At the start of 2021, due to an increase in COVID numbers we moved to a hybrid model of support but as soon as restrictions once again lifted we returned to mostly face-to-face support.

SUPPORT GROUPS:

Since mid-August the following support groups were ran using the **Kara Connect** platform:

- **Let's Talk**
- **Road to Recovery**



Kara Connect was also used for our **Reaching Out Programme** - a new psycho-educational group that we piloted for 8 weeks with 6 participants. Topics covered included: what is domestic abuse/coercive control (safety planning, impact; what is trauma and how it affects our bodies/brain/thinking, window of tolerance; self-care in the context of domestic abuse; appropriate supports; breaking free; emotional regulation; regaining sense of self. Women participated in an evaluation at the end of the course with very positive outcomes.



RTE COMIC RELIEF

Towards the end of 2020 we received funding from RTE Comic Relief to carry out the following pieces of work:

ADAPT AND RESPOND PROJECT:

This project set to carry out research into women's experience of domestic abuse during the pandemic. This research was conducted throughout 2021 and a number of women were interviewed about their experiences at home, how they sought out support and when they did engage with us how did they find that experience (given the restrictions that were in place in refuge and outreach). Based on the research findings a number of recommendations were made that we plan to implement in 2022.

DEMAND FOR DIGITAL PROJECT:

€10,000 was approved for our 'Demand for Digital' project which allowed us to install WiFi throughout the refuge and main building and install a new telephone system.

ADAPT CHILD AND YOUTH SERVICE

ADAPT's Child and Youth Service aims to:

- Promote the right of children and young people to have their voices heard and their needs met.
- Provide children and young people with the safety and freedom they need to be themselves and have confidence in their ability to make positive life choices.
- Work creatively and safely with children and young people and their mothers in relation to their experiences of domestic abuse.

The Child and Youth Service is based in a large, bright and airy facility. The service has a team of professional, highly qualified, and experienced staff who are trained to support children who are affected by domestic abuse. The service caters for children from birth to eighteen years of age and has the flexibility to accommodate differing numbers of children of different ages.



Returning from COVID

For most of 2021 the Child and Youth Team were operating in family pods with teams continuing to work a week on/week off basis. In July 2021, the Youth Club returned in an outdoor setting, with children and young people availing of the outdoor play area and basketball court.

Baby Support Programme

The Child and Youth Team returned to normal working hours in October, 2021. A new baby support programme was developed. The sessions are short, about one hour in duration, and the mother is invited to attend. The babies received a lot of floor play and physical comfort.

Trauma and Adversity Informed Approach

All the teams in ADAPT continue to work using a trauma and adversity informed approach. The Child and Youth Team developed a structure whereby all families enter the Child and Youth Service via the Family Support Programme and/or the Baby Support Programme. This allows the family to transition into the service as a family rather than siblings split into age appropriate rooms as per the traditional childcare model. This new trauma and adversity informed approach is resulting in good outcomes as children experience less separation anxiety can be supported as a family rather than competing with other children.



AWARENESS RAISING IN 2021

ONE MILLION STARS CAMPAIGN

The One Million Stars Ireland project is part of the now, global One Billion Stars movement. The project was initially founded in Australia in 2012, by Samoan artist Maryann Talia Pau. Maryann set up the project to help her community heal after the rape and murder of a young Irish woman living locally, in Melbourne. The project was brought to Ireland in 2018 by Art Therapist Siobhan McQuillan and Amber Women's Refuge in Kilkenny.

Aim of the Project

The aim of the project is to connect communities through the power of creativity and raise awareness of domestic violence and all violence towards women. Through workshops and installations, we aim to share knowledge and have open conversations to help create a greater understanding of the impact of domestic abuse and to create a safer violent free future for all.



The project promotes the values of social justice and that everyone deserves to be safe, no matter what economic, ethnic, social background you come from. The project is an inclusive community arts project connecting communities across Ireland in solidarity against domestic abuse and all forms of violence towards women. Each 8 - pointed star woven, represents light, hope and solidarity against violence.

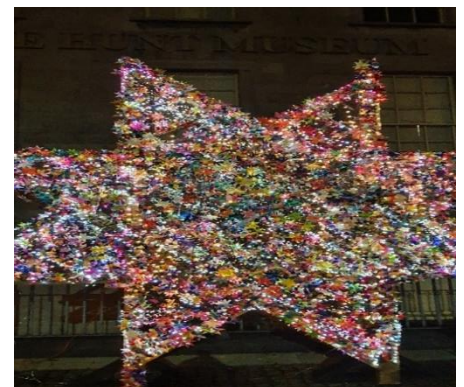


LIMERICK ONE MILLION STARS CAMPAIGN

In late 2019, a staff member from the Hunt Museum made contact with Amber Refuge to learn more about the project. Here in ADAPT we were invited to come onboard with the project and be part of the Organising Committee. The Committee comprises of members of the following organisations:

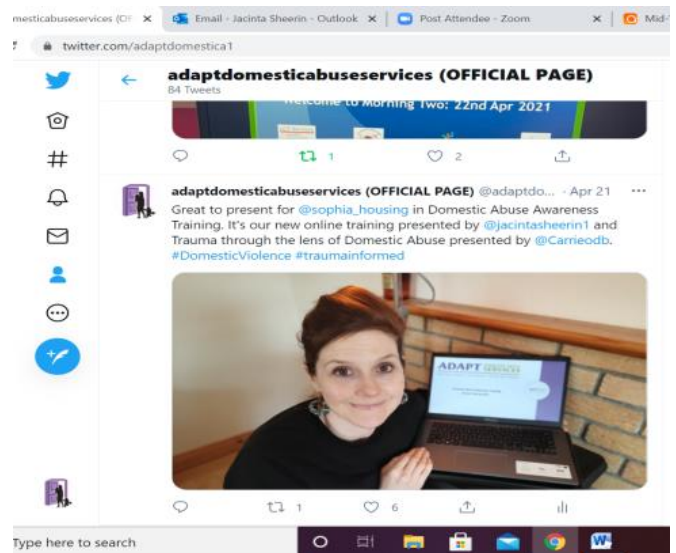
The Hunt Museum, ADAPT Domestic Abuse Services, University of Limerick, Mental Health Ireland and Limerick City & County Council

During 2021 a number of organizations took part in star weaving sessions including Family Resource Centres, schools, women's groups, students (secondary and third level), women from the Travelling Community, women living in Direct Provision. Residents in ADAPT refuge (women and children) and staff all participated in the star weaving sessions. For the 16 Days of Action on Violence against Women the stars formed part of an art installation at the Hunt Museum in the shape of a giant star. This was lit up for the duration of the 16 days.



DOMESTIC ABUSE AWARENESS TRAINING

In 2021, due to the continuation of COVID restrictions, our Domestic Abuse Awareness Training and our Understanding Domestic Abuse and Trauma Training was delivered on-line. 304 participants attended ADAPT awareness training sessions in 2021. These included specific trainings for foster carers, Gardai from Protective Services Units in Cork, Clare and Tipperary and front-line workers from the homeless sector.



MODULE 1: Domestic Abuse Awareness

Two hour training that provides participants with:

- An understanding of this major social issue & the complex dynamics in an abusive relationship
- An awareness of the barriers facing women experiencing domestic abuse
- Confidence in dealing with disclosure & an understanding of the referral process
- A knowledge of the safety planning, services and supports available to women experiencing domestic abuse

MODULE 2: Understanding Domestic Abuse & Trauma

Two hour training that provides participants with:

- An understanding of trauma - types of trauma
- An understanding of trauma related to domestic abuse - signs/symptoms
- A greater understanding of the impact of trauma - how people adapt to survive
- An introduction to trauma informed care / practice

RESIDENTS' ACTIVITY PROGRAMMES

Due to the pandemic all residents' activities that normally take place in the refuge had been cancelled. Resident's Activity programmes resumed again in September 2021 with weekly hair and beauty sessions and fitness/Zumba classes all ran in accordance with COVID guidelines. These ran up until December 2021, when due to a spike in COVID they had to be cancelled once again until 2022.

BTEI PROGRAMMES

COVID also meant that the uptake on the QQI classes was poor. One Level 3 class on Personal Effectiveness ran during 2021.



During 2021 ADAPT worked in partnership with the following agencies in order to optimise better outcomes for women and children experiencing domestic abuse:

An Garda Siochana	HSE Social Inclusion
Barnardos	Court Services
Dept. of Social Protection	Doras Luimni
Focus Ireland	Limerick Homeless Action Team
Limerick City and County Council	NOVAS
Suimhneas	Thomond House
Saoirse	Safe Ireland
TUSLA	

ADAPT also participated in the following fora:

- Limerick Family Dispute Resolution Project Steering Board
- Limerick Homeless Alliance
- Connecting for Life Strategic Implementation Group
- ABC Start Right Routine Enquiry Working Group
- Parenting Limerick
- LAN
- PPN
- Joint Policing Committee
- Steering group for TLC Kidz
- Steering group for Children in Care Healthy Relationships Programme
- Limerick Community Education Network
- Kilmallock Family Support Network
- Groups convened by Limerick Childcare Committee (e.g. Managers Forum)
- Women in Recovery Group

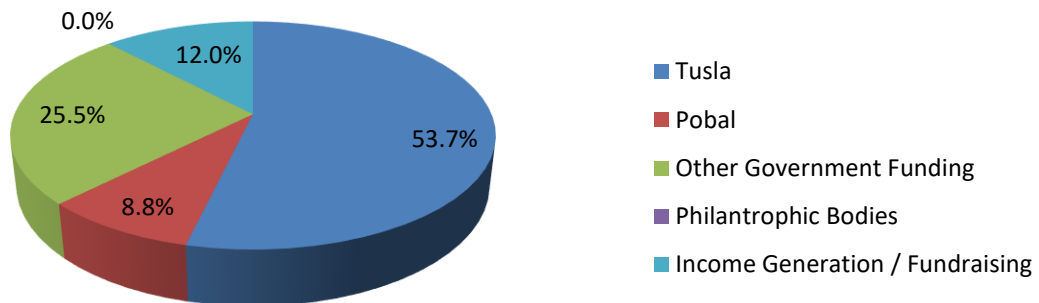
INCOME GENERATION AND FUNDRAISING

During 2021 ADAPT received **€1,908,307** in public funding. We used this funding to develop and deliver a range of service for women and children.

A further **€175,988** was raising through various donations/fundraising.

€58,317 was raised in funds through the charity shop activities and **€26,888** was raised through other income generating activities.

2021 Income Sources



ADAPT CHARITY SHOP

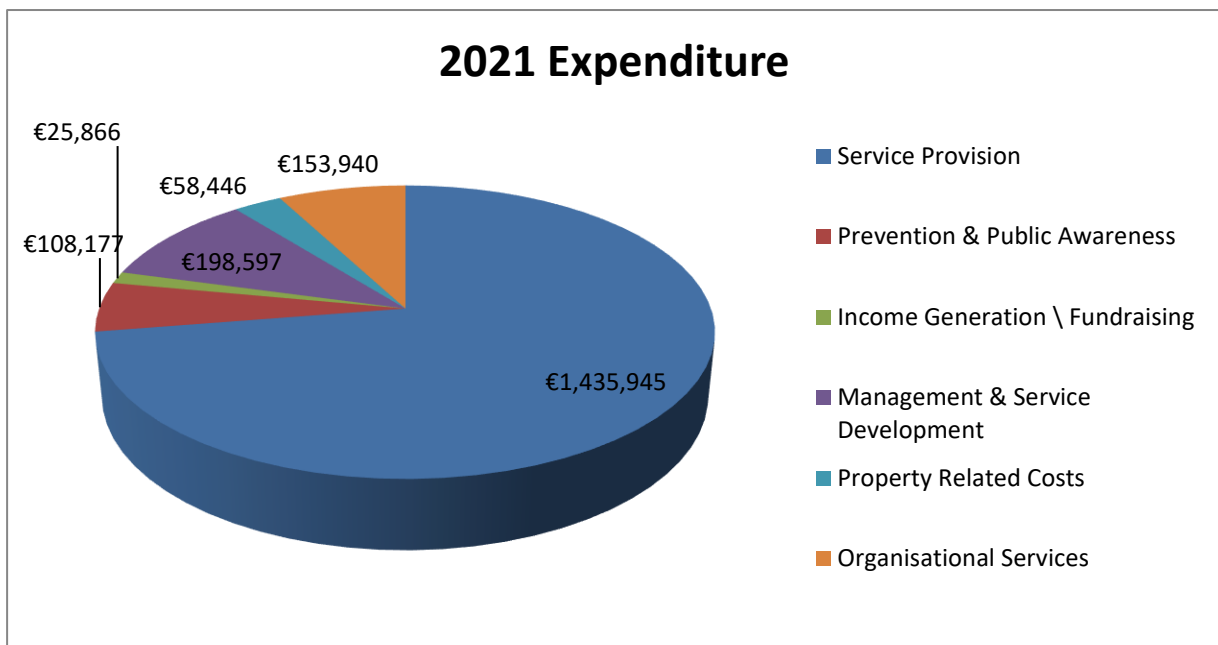
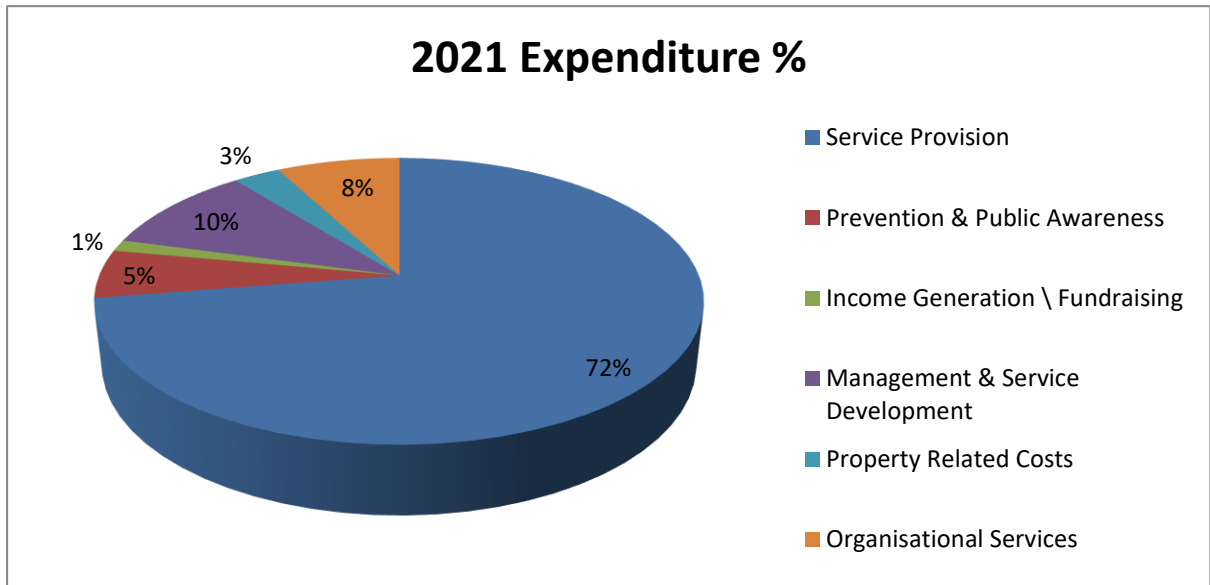
The ADAPT Charity Shop on Sarsfield Street closed its doors in early 2021. Most of 2021 was spent sourcing a new, bigger premises that could take on furniture sales. In the meantime the Parkway Shopping Centre offered us a temporary unit that allowed us to continue to trade and generate much needed income, for which we were extremely grateful. Thriftify, the on-line charity shop platform, was also utilised as a means of selling goods.



Thanks to all our volunteers and supporters. We are indebted to our socially conscious supporters and corporate partners, and to our dedicated volunteers who have helped us over the years. Unfortunately, due to COVID-19 we had to reduce workforce presence on-site. That, coupled with the charity shop having to close, meant that we were unable to avail of the support our on-site volunteers provide. Many of our fundraising events were also cancelled. However, the general public continued to support us through on-line fundraising events. We are truly appreciative of all the support we received over another particularly difficult and challenging year.

EXPENDITURE

Our total expenditure for the year was **€1,980,970**. The breakdown of expenditure is detailed in the chart below. Of this 80% was spent on service provision including prevention and public awareness



EXTRACT FROM FINANCIAL STATEMENTS 2021

ADAPT Domestic Abuse Services
(A Company Limited by Guarantee and not having Share Capital)

Statement of financial activities (including the income and expenditure account)
Financial year ended 31 December 2021

		2021 Unrestricted Funds €	2021 Restricted Funds €	2021 Total Funds €	Restated 2020 Total Funds €
	Note				
Income					
Donations and legacies	5	149,963	10,657	160,640	187,127
Charitable activities	5	85,005	1,923,656	2,008,661	1,950,415
Total Income		<u>234,968</u>	<u>1,934,313</u>	<u>2,169,301</u>	<u>2,137,542</u>
Expenditure on:					
Raising funds	7	25,866	-	25,866	27,882
Charitable activities	8	34,350	2,014,027	2,048,377	2,042,104
Total expenditure		<u>60,216</u>	<u>2,014,027</u>	<u>2,074,243</u>	<u>2,069,986</u>
Net Income		<u>174,772</u>	<u>(79,714)</u>	<u>95,058</u>	<u>67,556</u>
Transfer between funds					
Other recognised gains/ (losses):		-	-	-	-
Net movement in funds		<u>174,772</u>	<u>(79,714)</u>	<u>95,058</u>	<u>67,556</u>
Reconciliation of funds					
Total funds brought forward		587,277	3,026,472	3,613,749	3,546,193
Total funds carried forward		<u>762,049</u>	<u>2,946,758</u>	<u>3,708,807</u>	<u>3,613,749</u>

ADAPT Domestic Abuse Services
(A Company Limited by Guarantee and not having Share Capital)

Balance sheet
As at 31 December 2021

	Note	2021		Restated	
		€	€	2020	€
				€	€
Fixed assets					
Tangible assets	15	3,017,361		3,110,631	
			3,017,361		3,110,631
Current assets					
Debtors	16	9,860		16,606	
Cash at bank and in hand		1,217,999		916,318	
		1,227,859		932,924	
Creditors: amounts falling due within one year	17	(536,413)		(429,806)	
Net current assets		691,446		503,118	
Total assets less current liabilities		3,708,807		3,613,749	
Net assets		3,708,807		3,613,749	
The funds of the charity					
Restricted Funds	11	2,946,758		3,026,472	
Unrestricted Designated Funds	11	283,217		224,977	
Unrestricted Funds	11	478,832		362,300	
Members funds		3,708,807		3,613,749	