



ADAPT

DOMESTIC ABUSE SERVICES

Company registration number: 84938

ANNUAL REPORT 2022

Support and safety for women and their children affected by domestic abuse

Table of Contents



Chairperson’s Address	3
Director of Service’s Statement	5
2022 – At a Glance	7
About Us	8
Our People	9
Mission, Vision and Values	13
Refuge Service	14
Community Outreach Service	15
Working with the Courts Services	16
Child and Youth Services	17
Training and Development Work	18
New Capital Development Project	21
New Charity Shop	21
Interagency Working	22
Income Generation and Fundraising	23
Expenditure	25
Extracted form 2022 audited financial statements	26

ADAPT Domestic Abuse Service receives funding from the following agencies/departments:



DEPARTMENT OF JUSTICE, EQUALITY AND LAW REFORM
AN ROINN DLÍ AGUS CIRT, COMHIONANNAIS AGUS ATHCHÓIRITHE DLÍ



An Roinn Leanaí, Comhionannais, Míchumais, Lánpháirtíochta agus Óige
Department of Children, Equality, Disability, Integration and Youth



Fund for European Aid to the Most Deprived (FEAD)
The FEAD programme is an EU-wide initiative to help support people take their first steps out of poverty and social exclusion. 85% of the funding comes from the EU with the balance of funding coming from the Irish Exchequer.
The Department of Social Protection is the Managing Authority for FEAD in Ireland.
Our charity benefits from food assistance. The FEAD programme provides non-perishable food via their charity partners to families and individuals in need. Food supplied consist of breakfast cereals, rice, pasta and pasta sauce, soups, canned fish, jam, tea, coffee, sugar, and canned vegetables and fruit. The food items are easy to transport and store.
Our charity also benefits from material assistance under the FEAD Programme. The programme provides school stationary kits to children who are being supported by FEAD food assistance in both national and secondary schools.

CHAIRPERSON'S ADDRESS

Welcome to ADAPT Domestic Abuse Service's 2022 annual report. In the aftermath of the past two years where COVID-19 presented some challenges to the service, 2022 saw a number of significant developments.

Outreach development continued with more community organisations coming on board to help provide safe spaces where our staff can meet and support women throughout the City and County. Work continued on developing and strengthening relationships with An Garda Síochána and the Courts Services with the aim of creating quicker and more consistent responses for women who need legal protection. Additional funding was secured from Tusla to help support the outreach service meet the increasing demands. A total of 486 women were supported through outreach.

Funding was also secured to carry out remedial work in the refuge and to reconfigure space to allow us to provide additional emergency accommodation. Overall, there were 146 women admissions and 260 child admission to the refuge in 2022.

Behind all this work are the staff teams in ADAPT who provide a high standard of support and safety for the women and children who avail of our services. These teams are supported by the Coordination Team and the Senior Management team who ensure that quality of practice and facilities stem from a trauma-informed framework. I would like to thank all of the staff in ADAPT who go above and beyond for the women and children they support.

2022 also saw a change in the officer roles of the Board of Directors. Kevin O'Farrell stepped down as Chairperson and Eileen O'Neill and Mary Kenehan also resigned from the Board. All three Directors had given many years of dedication and commitment to ADAPT and on behalf of the Board of Directors, the management and staff of ADAPT, I'd like to thank them sincerely and wish them well. I would also like to thank them personally for the support they gave me in taking over the role of Chairperson. To the existing Board of Directors, I'd like to take this opportunity to extend my sincere gratitude for your ongoing support and commitment to ADAPT.

I also wish to thank all of our funders for their continued support and who have assisted ADAPT in meeting some of the increased demands on service provision.

I also want to acknowledge the ongoing financial support and donations received from the many individuals, businesses, community groups and agencies. This financial support allows ADAPT to continue to provide quality vital services in the local community.

As a much-needed source of income, 2022 saw us finally secure a new building for our charity shop. This new building allows us to expand the range of goods that we will be selling, which will hopefully in turn provide greater revenue for the service. A huge amount of work was carried out by the shop manager and her team to get the shop up and running and I'd like to thank all of them for creating beautiful interior décor in the shop, setting up donations and storage space and running the shop itself so efficiently.

Finally, to all the women and children who availed of our services in 2022. We hope that we met all of your expectations and that you received the care and support you needed. It's our privilege to support you and thank you for trusting us.

Leonie Kerins
CHAIRPERSON

DIRECTOR OF SERVICES STATEMENT

ADAPT's 2022 Annual Report once again highlights the high level of domestic abuse and coercive control that continues to be perpetrated in homes throughout the region, and indeed, nationally.

One of the biggest challenges for ADAPT in 2022 was being able to move women and children on from refuge, who had to leave their homes because of the abuse they experienced into safe accommodation. The housing crisis, which impacted on the entire nation, had devastating consequences for those families who were desperately trying to leave their homes and move on. The lack of move-on options resulted in families staying in refuge longer than required, which meant that on occasion we were unable to accommodate some families due to the refuge operating to full capacity.

One of the responses to this crisis was to develop our outreach service and to strengthen protective factors for women through the criminal justice system. Work continued with An Garda Síochána on Operation Sábháilte and in January 2022 we had the pleasure of hosting three local Judges to visit the refuge and meet with us and hear some of our concerns. Further meetings with the Court Services during the year strengthened this partnership and the demand for legal applications increased.

Another practical response was that we secured private funding through the Community Foundation of Ireland to convert a reception room into an emergency bed-sit which can be used to accommodate a woman or a woman with a small amount of children, in a temporary capacity until we are able to secure refuge accommodation.

Throughout 2022 the ADAPT staff teams worked tirelessly to continue to provide a full range of services to women and children. However, a cyber-attack in March 2022 put additional pressure on the staff as our server was destroyed and had to be re-built. Funding from TúsIa allowed us to carry out the remedial works and stronger firewalls and security were put in place.

In early 2022 we went out to tender to appoint a design team for the proposed new capital build. James Corbett architects were successful with the tender and commenced the design process in June 2022. However, this was delayed as a proposal was submitted to the HSE/TúsIa to acquire an adjoining site of land to the refuge which would allow greater accessibility and scope to the proposed new build.

In April 2022, we began the process of implementing eSafe. eSafe is an integrated information solution developed specifically for domestic violence services nationwide. This was a massive piece of work in terms of data migration, staff training and setting up of new systems to support eSafe. However, the accuracy of the data produced demonstrates the level and scale of support that our staff provide to women and children throughout all of our services.

ADAPT's core funding is received from the Child & Family Agency (TUSLA). We also receive funding to run our Childcare Service from the Department of Children, Equality, Disability, Integration and Youth via Pobal. Our core funding to run our Drop-In Court Support and Information Service and Court Accompaniment Service comes from the Department of Justice. ***We are extremely grateful to all our funders for their assistance in providing vital services for women and children.***

Towards the end of 2022 ADAPT received confirmation that we were successful in securing funding from the Dormant Accounts Social Enterprise Fund to carry out essential refurbishment works in the refuge which will commence in 2023.

As well as all our funders, I'd like to extend a huge thanks to the local community for the support we receive year in, year out. From members of the public who carry out fundraising on our behalf, to local corporates and small businesses that give so generously throughout the year – many thanks.

I also wish to acknowledge and thank all the staff teams in ADAPT. Their commitment and dedication to providing the best service possible to the women and children that need our support is outstanding.

Finally, I'd like to thank our Board of Directors for their hard work and support throughout 2022. To the out-going Chair, Kevin O'Farrell, I'd like to extend a huge thanks for all the support you provided over the years and to the incoming Chair, Leonie Kerins, I'd like to welcome you to the role and look forward to working closely with you over the coming years.

Denise Dunne
Director of Services

2022 AT A GLANCE



Refuge Services

145 WOMEN ADMITTED TO REFUGE



Community Outreach

486 WOMEN SUPPORTED THROUGH COMMUNITY OUTREACH



Helpline

1,524 HELPLINE CALLS WERE ANSWERED



Step-down Housing

5 FAMILIES WERE ACCOMMODATED IN OUR STEP-DOWN HOUSING



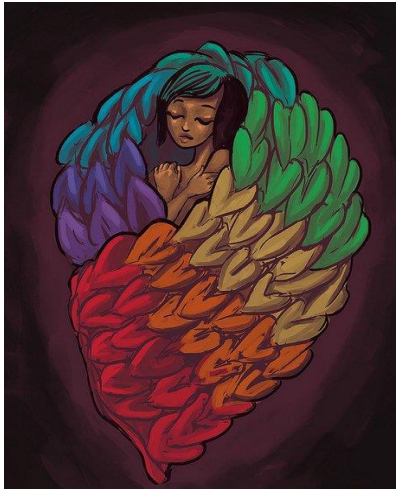
Court Services

274 WOMEN WERE ACCOMPANIED TO COURT
45 WOMEN AVAILED OF THE DROP-IN COURT INFORMATION AND SUPPORT SERVICE

Child and Youth Support Service

151 CHILDREN WERE SUPPORTED BY OUR CHILD AND YOUTH SUPPORT SERVICE





ADAPT DOMESTIC ABUSE SERVICES—ABOUT US

ADAPT Domestic Abuse Services is a support service for women survivors of domestic abuse and their children. Located in Limerick City we provide a range of services including 24 hour helpline support; emergency refuge accommodation; outreach services; emotional and practical support for women and children. We also work with other agencies to enhance their understanding of domestic abuse and their capacity to recognise, respond and refer appropriately.

ALL OF OUR SERVICES ARE DELIVERED WITHIN A TRAUMA-INFORMED FRAMEWORK

SERVICES THAT ADAPT PROVIDES:

- + 24 hour access to safe refuge
- + 24 hour free confidential helpline
- + Community Outreach Services throughout Limerick City and County
- + One to one practical and emotional support for women survivors
- + Information, advocacy and accompaniment to different services
- + Supports for children and young people who have experienced domestic abuse/coercive control including creative therapy.
- + Drop-In Court Information and Support Service based in Merchant's Quay Courthouse – 2 days per week.
- + Court Accompaniment
- + Support Groups for Women
- + Community Education and QQI accredited courses for women
- + Training and Public Awareness Raising on Domestic Abuse and Coercive Control

OUR PEOPLE

BOARD OF DIRECTORS:

ADAPT Domestic Abuse Services is governed by a Board of Directors who come from a range of different backgrounds, specialisms and experiences. The Board are supported and informed by the Audit and Finance Committee, the HR Committee and the Governance Committee. The Board of Directors of ADAPT Domestic Abuse Services is committed to maintaining the highest standards of corporate governance and is in compliance with the Charities Governance Code.

The Board of Directors comprise the following: Kevin O'Farrell (Chair); Deirdre Moore, Eileen O'Neill, Mary Kenehan, John Flanagan and Leonie Kerins. The Board of Directors met on the following dates during 2022: 02/02/2022; 21/03/2022; 25/05/2022; 20/07/2022; 28/09/2022; 12/10/2022 (AGM); 14/12/2022. The following Board members stepped down at the AGM in 2022: Kevin O'Farrell, Eileen O'Neill and Mary Kenehan. Leonie Kerins took up the position of Chair and Marie Woods was elected onto the Board at the AGM.

AUDIT AND FINANCE COMMITTEE: This Committee has oversight of the finances of the organisation on behalf of the Board. In 2022 the members were Kevin O'Farrell (Board member), and Therese Ross (co-opted to sub-group). At the AGM Kevin O'Farrell stepped down from the Board and from this Committee and Leonie Kerins filled this position on the Committee. Denise Dunne (Director of Services) and Kevin Taylor (Finance and Organisational Services Manager) attends meetings of this committee.

HR COMMITTEE: This Committee has oversight of HR matters on behalf of the Board. In 2022 the members were Mary Kenehan (Board member) and Eileen O'Neill (Board member). Both Mary Kenehan and Eileen O'Neill stepped down from the Board in 2022 but remained on this Committee. Marie Woods (Board member) joined this Committee in 2022. Denise Dunne (Director of Services) and Kevin Taylor (Finance & Organisational Services Manager) attend meetings of this committee.

GOVERNANCE COMMITTEE: This Committee has oversight of compliance with the Charities Regulator and review of some of the governing policies of the organization. In 2022 the members were Alix Tiernan (former Board member), Leonie Kerins (Board member), John Flanagan (Board member). Denise Dunne (Director of Services); Claire Anderson (Asst. Director of Services) and Kevin Taylor (Finance and Organisational Services Manager) attend meetings of this committee.

RISK MANAGEMENT: Senior Management and the Board of Directors regularly review our Risk Register to ensure a high quality, safe environment for clients, staff, volunteers and visitors.

OUR PEOPLE

Staffing Structure:

During 2021 ADAPT's Senior Management Team comprised:

- ✚ Director of Services (Denise Dunne)
- ✚ Assistant Director of Services (Claire Anderson)
- ✚ Financial and Organisational Services Manager (Kevin Taylor).

The Director of Services reports directly to the Board of Directors and provides reports to the Board in advance of Board meetings to ensure that it has full oversight of its governing responsibilities. Matters such as policy, strategic development, corporate governance and financial budgets are monitored by the Board.

In addition, ADAPT has a 38 (28.94 WTE) core staff working across 6 departments. An additional 19 staff working directly for ADAPT are employed through the Community Employment Scheme and Job Initiative. These staff work in Property Services, ADAPT Charity Shop and Refuge teams.

ADAPT is also the Sponsor for an additional 21 CE positions across 6 other organisations namely:

Citizen's Information Services, Mid-West SIMON, Doras Lúimní, Headway, Self-Help Africa and Irish Cancer Society.



OUR PEOPLE



REFUGE SERVICE

This team comprises 9 (6.34 WTE) core staff. Their focus is on addressing the needs of women who are seeking refuge and to provide support to women and children while they are living in the refuge and over the Helpline.

TRAINING AND DEVELOPMENT

This team comprises 2 (1.84 WTE) core staff. Their focus is on prevention education, public awareness and training. This team also provide our T.E.D. Service (Training, Education and Development Service) by providing 1-2-1 coaching for women wishing to return to education or enter the workforce, Quality and Qualifications Ireland (QQI) accredited courses and Community Education courses.



ADAPT'S TEAMS



WOMEN'S SERVICES

This team comprises 7 (5.65 WTE) core staff. Their focus is to provide support and advocacy for women who are resident in the refuge, those that attend outreach centres and Helpline callers. They also provide accompaniment to the various services including court. This team also facilitate the Drop-In Court and Information Service based in Merchant's Quay, Courthouse, Limerick



CHILD AND YOUTH SUPPORT SERVICES

This team comprises 10 (5.85 WTE) core staff). Their focus is supporting children and young people who have experienced domestic abuse/coercive control.

OUR PEOPLE

ADAPT'S TEAMS

ORGANISATIONAL SERVICES

This team comprises of 5 (3.28 WTE) core staff. They provide services to support ADAPT to function to the appropriate financial and compliance standards. These services include Finance, IT, Administration and Compliance.



PROPERTY SERVICES

This team comprises 4 (2.67 WTE) core staff. Their focus is on maintaining the upkeep of the refuge, offices, surrounding groups and transitional houses. They also maintain high health and safety standards related to the buildings and grounds.

CHARITY SHOP

This team comprises of 1 (0.31 WTE). The charity shops provides earned income to supplement ADAPT's activities and services. The charity shop also provides clothing and furniture for families that ADAPT supports.



MISSION, VISION AND VALUES

MISSION

The Mission of ADAPT is to offer support and safety to women and their children affected by domestic abuse. The service is committed to challenging domestic abuse by strengthening the capacity of individuals, communities and organisations to respond effectively and to change society so that domestic abuse is no longer tolerated.

The Vision of ADAPT is a world free from domestic abuse.

VALUES

Empowerment: We value empowerment as an effective approach when supporting women affected by domestic abuse. This approach helps the women become stronger and more confident, especially in relation to making decisions that affect their lives.

Respect: We are committed to respecting the dignity of every individual that comes in contact with ADAPT including our service users, our staff, volunteers and external agencies.

People-Centred: We are committed to providing services that are responsive and relevant to each service user's unique needs. We actively listen to the voice of our service users and value their feedback.

Equality: We embrace the values of equality and diversity by treating staff, volunteers and service users with impartiality, inclusiveness, openness and fairness.

Empathy: We work with sensitivity and compassion so that we can better understand and respond to the needs of the women and children who seek our support.

Non-Judgemental: We believe that all our service users have the right not to be judged. We are committed to treating all service users the way we would want to be treated, regardless of their life circumstances, challenges and experiences.

Teamwork: We believe in working together in a spirit of solidarity and co-operation where staff and management all contribute to the development of the service.

Refuge Services

As the housing crisis worsened in 2022 this had a direct impact on women being able to move on from refuge into alternative, safe accommodation. As a result, many families stayed longer in refuge than required. Despite challenges in moving women on from refuge, due to the housing crisis, the 2nd half of 2022 showed an increase in admissions to the refuge. Overall, there was a 17% increase in admissions compared to 2021.

Admissions to refuge – 145 women and 260 children

As a response to the growing demand for refuge spaces funding was applied for from the Our Lady of Charity of the Good Shepherd (OLCGS) Ireland Trust Fund at The Community Foundation for Ireland and from the Community Foundation for Ireland to convert a reception room into an emergency bed-sit. This allows us to provide temporary refuge accommodation if the refuge is full and if we are unable to secure a safe place for the woman/family.



Emergency bed-sit with pull-down bed

These grants also allowed us to refurbish some of the refuge apartments and carry out necessary work to support rooms.

Residents' Activities

During 2022 residents' activities were organised to run in the refuge. These included yoga, Zumba, beauty, arts and crafts and hairdressing. These activities allow the women to come together, relax and have some fun!

From the start me and my son were safe. ADAPT, my keyworkers and all staff are very helpful. I am Asian, away from home but I feel at home in ADAPT. I am so proud and appreciated the services here in ADAPT.

Thank you so much
[Service User Feedback](#)

I appreciated some activities that make me relaxed and I forgot stress for a while. It helps a lot - thank you."
[Refuge Resident participating in Residents' activities](#)

Community Outreach Services

In order to make our services more accessible we expanded our community outreach service throughout Limerick City and County. Focused awareness raising took place in areas where new clinics were opened with local statutory and community agencies and by the end of 2022 community outreach clinics were up and running in the following venues:

Limerick City:

- Moyross
- City Centre location
- Southill

Limerick County:

- Hospital
- Rathkeale
- Newcastlewest
- Croom

486 women were supported through outreach in 2022

The support from staff and getting the transitional house meant I did not have to return to an unsafe home. It meant I could keep working and keep my routine which protected my mental health. I don't know what I would have done without you

[Feedback from Outreach Service User](#)

Operation Sábháilte

Work continued with An Garda Síochána and in particular around developing Operation Sábháilte. Operation Sábháilte commenced in December 2020 with the Gardaí in Henry Street. The pilot aimed at providing Garda support to identified high-risk victims of domestic abuse/coercive control. During 2022 the Sábháilte team met with staff in ADAPT House and attended a joint meeting with the Court Services. Support was also provided to women using our services who were identified by us as high risk or who were having issues around breaches of orders etc. A meeting was held with the Policing Authority in April 2022 which explored the positive outcomes for women who are linked into Operation Sábháilte.



Working with the Court Services

2022 saw a greater collaboration between ADAPT and the Court Services. In January 2022, we hosted a visit by three local family law judges to ADAPT. This allowed us to explore with the judges some of the barriers women face when they seek legal protection. It also gave us an opportunity to hear more about the legal framework that judges must work within and how better for us to help women understand this also.


Later in the year we hosted two meetings with the Court Services. The second meeting was a joint meeting between ADAPT, the Court Services and Gardaí from Protective Services and Operation Sábháilte. Both meetings resulted in strengthening the collaborative efforts of three services in providing support to women applying for legal protection.

In May 2022 we commenced our Drop-In Information and Support Service every Monday in Merchant's Quay Courthouse. While referrals started off slow, towards the end of the year they increased greatly.

**274 WOMEN WERE ACCOMPANIED TO COURT
45 WOMEN AVAILED OF THE DROP-IN COURT
INFORMATION AND SUPPORT SERVICE**

Support Groups

Throughout 2022 support groups continued to run remotely via Kara Konnect platform. 2 groups ran – Reaching Out and Let's Talk. Feedback from the support groups was very positive.



THE COMMUNITY, THE GROUP, YOU ARE
ALL SO SUPPORTIVE. IT WAS VERY
EMPOWERING, SHARING STORIES,
LEARNING WHAT OTHERS DO AND
KNOWING THAT YOU CAN COME OUT THE
OTHER END. THERE IS HOPE AND WE
LEARN THAT FROM EACH OTHER

Feedback from Support Group User

Child and Youth Support Services



Based on the experience of supporting children during COVID in 2022 the Child and Youth Team developed a structure whereby all families enter the Child and Youth Service via the Family Support Programme and/or the Baby Support Programme. This allows the family to transition into the service as a family rather than siblings split into age-appropriate rooms as per the traditional childcare model. This new trauma and adversity informed approach is resulting in good outcomes for children as they experience less separation anxiety and can be supported as a family rather than competing with other children.

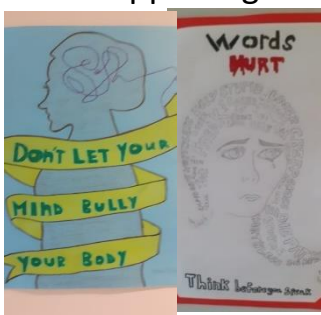
TLC Kidz – ADAPT staff continued to co-facilitate both the Mothers’ Group and the Children’s Group throughout 2022.

DATS - Domestic Abuse Teen Support. This programme is one-to-one support where the young person chooses to look at a topic that is currently relevant to their life e.g. warning signs in relationships etc. The DATs mentor supports the young person to explore this topic in a safe and trauma-informed environment.

The **Mother and Toddler Group** was very active during 2022. The Mother and Toddler Group provides a relaxed, informal environment for supporting Mums around self-care, infant play and infant mental health.



I appreciated Child and Youth service as I have one child and they're always there every time I have important thing to do, to go out. They are very kind."
Feedback from Mother using Child and Youth Support Service



Youth Club:

Youth Club runs every Monday and Friday. Various projects ran throughout the year in the Youth Club including designing anti-bullying posters.

Creative Therapy Service

In October 2022 a new Creative Therapist was recruited. The service is developing and runs every Monday in ADAPT.

151 CHILDREN WERE SUPPORTED BY OUR CHILD AND YOUTH SUPPORT SERVICE

Training and Development Work

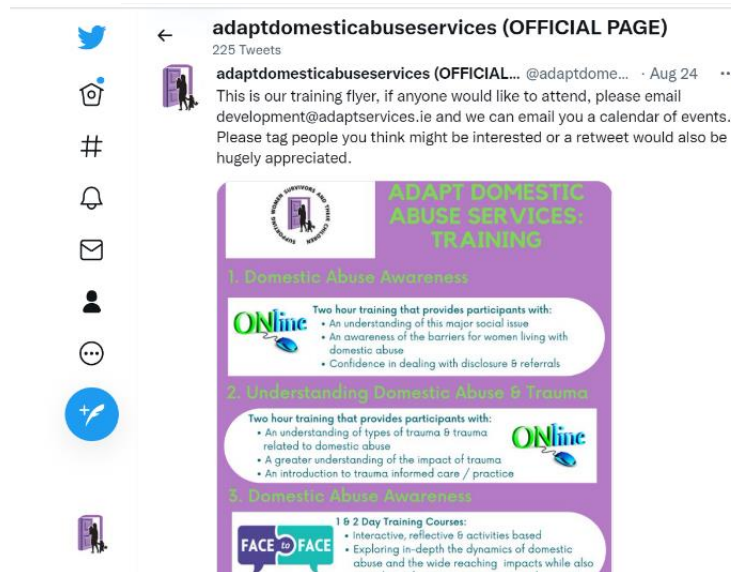
2022 saw the resumption of face-to-face domestic abuse training as well as the continued provision of remote training. As part of the Public Health Nurses Routine Enquiry pilot that is being developed in the Mid-West region ADAPT provided bespoke training in June to 16 public health nurses on routine enquiry into domestic abuse.

In these times for those who are interested in a Domestic Abuse Awareness Course whether you are a professional, teacher, parent or just interested in learning these courses from [@adaptdomestical](https://www.adaptdomestical.ie) is worth considering. Very positive feedback from our staff and volunteers.

Organisation who availed of our Domestic Abuse Awareness Training

277 PEOPLE PARTICIPATED IN DOMESTIC ABUSE TRAINING IN 2022

During the year 18 public awareness presentations were delivered to a total of 1090 attendees. Media work continued throughout the year with interviews being given on local radio stations and to local newspapers.



Calendar of Events

ADAPT
Training, Education & Development Service

COACHING
Referrals: are now being accepted for 121 coaching & referral intake will be ongoing.
Appointments/sessions: will begin in September 2022
Introductory meetings: will be held with individuals prior to any commitment to engage the service.

QQI ACCREDITED COURSES

Course	Start Date	Time	Day	Duration
Personal Effectiveness (Level 3)	20.09.22	10-12	Tuesday	16 Weeks
Communications (Level 3)	28.09.22	10-12	Wednesday	16 Weeks

Notes:
 -The commencement of courses will be dependent on numbers of participants.
 -The Venue for QQI Courses is ADAPT.
 -As courses are accredited, a commitment is required to attend classes consistently.
 -Courses will follow the same breaks as formal school setting (e.g. no classes during mid-term/Christmas official holidays)
 -Classes are run once a week for 2hrs
 -There is no cost for participants to attend QQI courses in ADAPT

PERSONAL DEVELOPMENT WORKSHOPS

Workshop	Workshop	Time	Day	Venue
Confidence	06.10.22	9-1pm	Thursday	ADAPT
Self-compassion	24.11.22	9-1pm	Thursday	ADAPT
Self-care	19.12.22	9-1pm	Monday	ADAPT

TED Service: Training, Education & Development service

In 2022 a new Training, Education and Development service (T.E.D.) was developed which comprised 1-2-1 coaching sessions with the women as well as non-accredited support/development class to prepare them for re-entering education

The service commenced in September 2022 and aimed to:

- Empower participants/learners to develop their own social networks which leads to increased connections and social supports.
- Assist people to develop/improve their overall confidence, communication and social skills by supporting them to learn new skills and improve their education.

QQI Courses:

Two QQI Courses ran during 2022 – Communications Course and Personal Effectiveness Course which ran twice throughout the year.

Safe Pharmacies Initiative:

This is an initiative that Safe Ireland has been working on with the Irish Pharmaceutical Association in promoting pharmacies as safe spaces that will support women to make a phone call to a local domestic abuse service.

Throughout July/August 2022 – 39 pharmacies in Limerick were contacted by our Development Worker and given information on services and offered further training and support in relation to domestic abuse.



Poster Campaign in Rathkeale


As part of the 16 Days Campaign on Elimination of Violence Against Women staff from our Training and Development team worked with the Rathkeale Social Inclusion Team and designed a poster with a QR-Code that when scanned brought up a video that shares information on how to make contact with ADAPT. The staff met with local businesses in Rathkeale to promote the poster campaign. The campaign ran until the end of January 2023.

It was a pleasure to attend the launch of the One Million Stars Project HOPE sign at the Desmond Castle Grounds last Friday evening. This sign symbolises the fight to end Domestic Violence against women and girls. Well done to [West Limerick Mental Health Association](#) for organising the event and providing an opportunity to meet and chat with others in the Red Door Gallery afterwards.



One Million Stars Campaign

ADAPT continues to participate in the International One Million Stars Campaign. Throughout 2022 star weaving sessions continued to take place in Community Centres, schools and with some of the residents in ADAPT. Each individual star represents light, hope and standing in solidarity with women who experience violence. The star weaving sessions themselves created a safe space for people to get together and talk about violence against women and in general raise greater awareness on the issue.

 ADAPT Domestic Abuse Services 25 Nov · 🌐

Rathkeale Together in partnership with ADAPT Domestic Abuse Services begins a poster campaign today November 25th coi... See more



NEW CAPITAL DEVELOPMENT PROJECT

In 2022 ADAPT went out to tender for a Design Team for the new capital development project funded by the JP McManus Benevolent Fund. Work began on initial design plans mid-year and consultations took place towards the end of the year with HSE/Tusla regarding the possible acquisition of an adjacent site to build on.

NEW CHARITY SHOP

In August 2022 ADAPT opened a new charity shop in Parnell Street. During the year the Parkway Shopping Centre allowed us to temporarily trade from there while we sourced a new premises, for which we are extremely grateful. Work commenced by ADAPT staff on the new premises in April 2022 and we opened the doors on 2nd August.

adaptdomesticabuseservices (OFFICIAL PAGE)

225 Tweets

 Claire-Ann @Claire_Annlyons · Aug 1

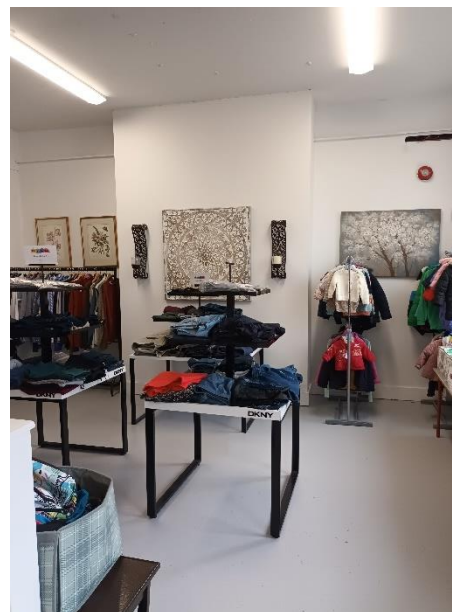
Great, Clear Visual Sign for new Adapt shop in Limerick. Domestic Abuse Services Supporting Women and Children. 24-hour freephone helpline.. 1800-200-804



From this....



To this....



***And finally
to this....***



INTERAGENCY WORKING

During 2022 ADAPT worked in partnership with the following agencies in order to optimise better outcomes for women and children experiencing domestic abuse:

An Garda Síochána

Barnardos

Dept. of Social Protection

Focus Ireland

Suimhneas

Saoirse

TUSLA

HSE Social Inclusion

Court Services

Doras Luimní

Limerick Homeless Action Team

Thomond House

Safe Ireland

NOVAS

IPAS Network

Hospital FRC

Limerick City and County Council

ADAPT also participated in the following fora:

- Limerick Family Dispute Resolution Project Steering Board
- IPAS Network
- Limerick Homeless Alliance
- Connecting for Life Strategic Implementation Group
- ABC Start Right Routine Enquiry Working Group
- Parenting Limerick
- LAN
- PPN
- Joint Policing Committee
- Steering group for TLC Kidz
- Steering group for Children in Care Healthy Relationships Programme
- Limerick Community Education Network
- Kilmallock Family Support Network
- Groups convened by Limerick Childcare Committee (e.g. Managers Forum)
- Women in Recovery Group

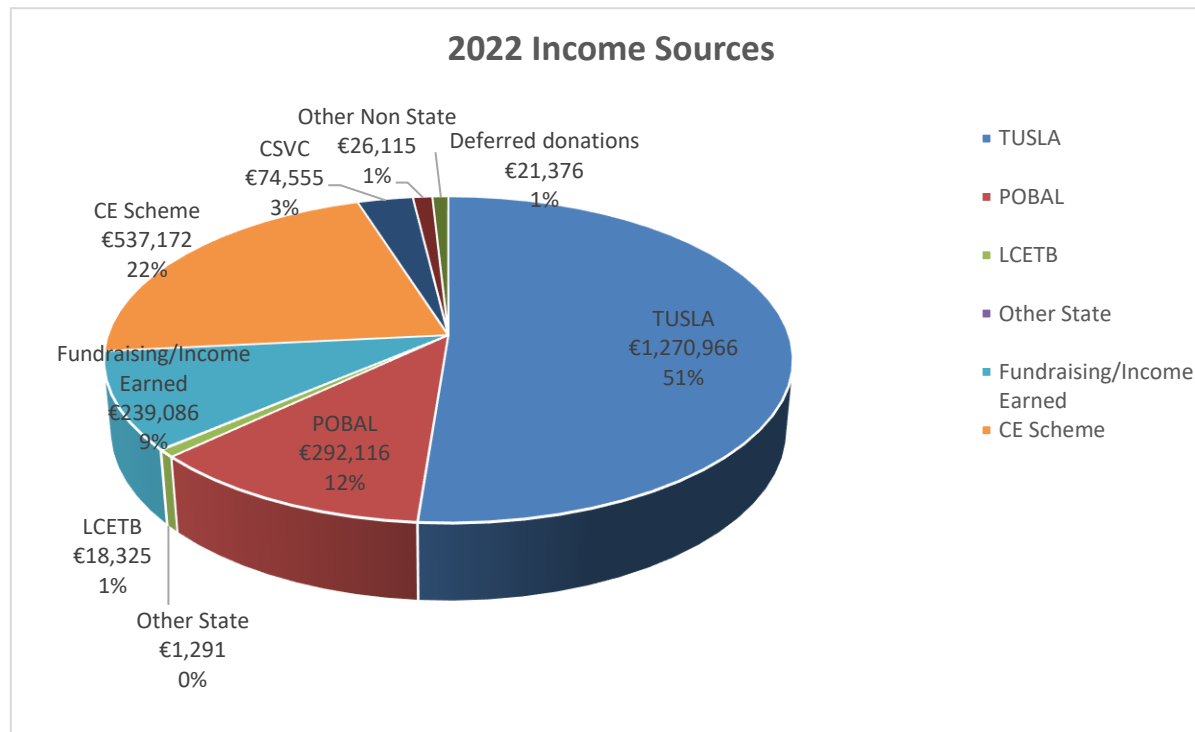


INCOME GENERATION AND FUNDRAISING

During 2022 ADAPT received €2,194,425 in public funding. We used this funding to develop and deliver a range of service for women and children.

A further €119,073 was raised through various donations/fundraising.

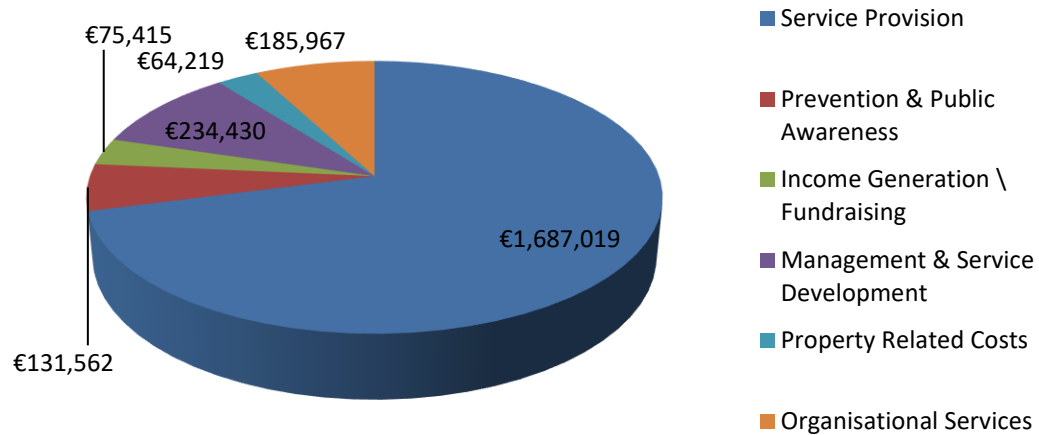
€120,013 was raised in funds through the charity shop activities and €47,490 was raised through other income generating activities.



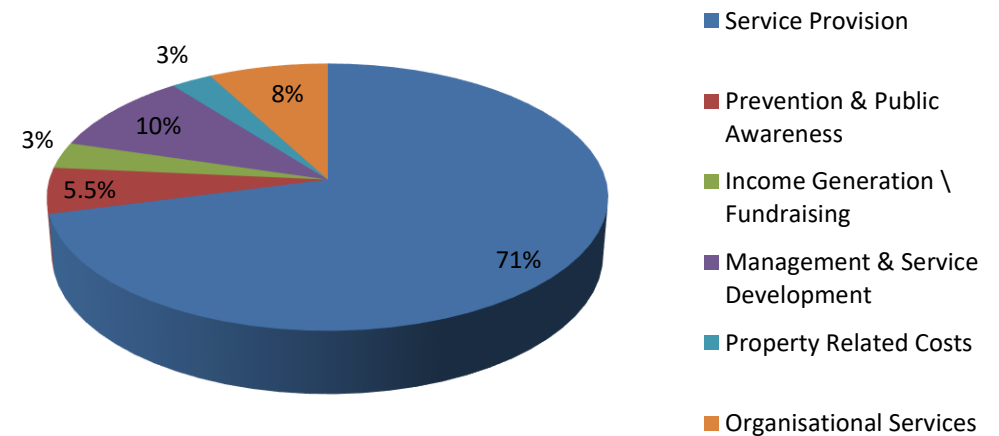
EXPENDITURE

Our total expenditure for the year was **€1,980,970**. The breakdown of expenditure is detailed in the chart below. Of this 81% was spent on service provision including prevention and public awareness.

2022 Expenditure



2022 Expenditure %



EXTRACT FROM AUDITED FINANCIAL STATEMENTS 2022

ADAPT Domestic Abuse Services
(A Company Limited by Guarantee and not having Share Capital)

Statement of financial activities (including the income and expenditure account)
Financial year ended 31 December 2022

		2022	2022	2022	2021
	Note	Unrestricted Funds €	Restricted Funds €	Total Funds €	Total Funds €
Income					
Donations and legacies	5	81,097	26,496	107,593	160,640
Charitable activities	5	145,396	2,228,128	2,373,524	2,008,661
Total Income		226,493	2,254,624	2,481,117	2,169,301
Expenditure on:					
Raising funds	7	75,661	-	75,661	25,866
Charitable activities	8	58,611	2,334,338	2,392,949	2,048,377
Total expenditure		134,272	2,334,338	2,468,610	2,074,243
Net Income		92,221	(79,714)	12,507	95,058
Transfer between funds					
Other recognised gains/ (losses):		-	-	-	-
Net movement in funds		92,221	(79,714)	12,507	95,058
Reconciliation of funds					
Total funds brought forward		762,049	2,946,758	3,708,807	3,613,749
Total funds carried forward		854,270	2,867,044	3,721,314	3,708,807

Balance sheet
As at 31 December 2022

	Note	2022 €	€	2021 €	€
Fixed assets					
Tangible assets	15	2,929,097		3,017,361	
			2,929,097		3,017,361
Current assets					
Debtors	16	26,230		9,860	
Cash at bank and in hand		1,227,615		1,217,999	
		1,253,845		1,227,859	
Creditors: amounts falling due within one year	17	(461,628)		(536,413)	
Net current assets		792,217		691,446	
Total assets less current liabilities		3,721,314		3,708,807	
Net assets		<u>3,721,314</u>		<u>3,708,807</u>	
The funds of the charity					
Restricted Funds	11	2,867,044		2,946,758	
Unrestricted Designated Funds	11	333,217		283,217	
Unrestricted Funds	11	521,053		478,832	
Members funds		<u>3,721,314</u>		<u>3,708,807</u>	

These financial statements were approved by the board of directors on 30 August 2023 and signed on behalf of the board by:


.....
John Flanagan
Director


.....
Leonie Kerins
Director

